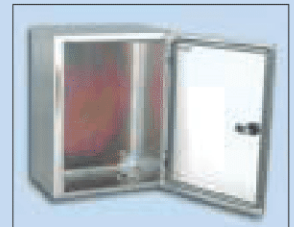


# Wall Mounting Stainless Steel Enclosures



## IP 65 (IEC 529)



- Made of stainless steel SS304, hairline finished.
- Complete with mounting plate (galvanised steel), bottom gland plate and plastic lock.
- Enclosure body folded and welded from single piece material for maximum protection.
- Double folded gutter at door frame to increase rigidity and prevents water from entering while door is opened.
- Single piece gasket at door forms a continuous seal.
- Conceal hinges provide 120° door opening.
- Earthing facilities on body, door and mounting plate.
- Material Specification.
  - Body & door - 1.5 to 2.0mm SS304
  - Mounting plate - 1.5 to 2.0mm galvanised steel
  - Canopy & rainhood - 1.5mm SS304
  - Wall mounting bracket - 2.0 to 3.0mm SS304



SIRIM  
Certified to: MS IEC 60529: 2005  
Certification No.: LC029301

# IP 65 (IEC 529)

## Wall Mounting Stainless Steel Enclosures

Item	Model	Dimension (mm) Height x Width x Depth	Mounting Plate	Nos. of Lock	Gland Hole	Canopy	Inner Door	Transp. Door	Rain Hood	Modular Chassis
1	CRX 252015	250 x 200 x 150	214 x 150	1	0	•				
2	CRX 302515	300 x 250 x 150	264 x 200	1	A1	•		•		•
3	CRX 303015	300 x 300 x 150	264 x 250	1	A1	•		•		•
4	CRX 403015	400 x 300 x 150	364 x 250	1	A1	•		•		•
5	CRX 403020	400 x 300 x 200	364 x 250	1	A1	•	•	•	•	•
6	CRX 404020	400 x 400 x 200	364 x 350	1	B1	•	•	•	•	
7	CRX 504020	500 x 400 x 200	464 x 350	2	B1	•	•	•	•	•
8	CRX 604020	600 x 400 x 200	564 x 350	2	B1	•	•	•	•	•
9	CRX 606025	600 x 600 x 250	564 x 550	2	C1	•	•	•	•	
10	CRX 705025	700 x 500 x 250	664 x 450	2	C1	•	•	•	•	•
11	CRX 806025	800 x 600 x 250	764 x 550	2	C1	•	•	•	•	•
12	CRX 808030	800 x 800 x 300	764 x 750	2	C2	•	•	•	•	
13	CRX 1008030	1000 x 800 x 300	964 x 750	2	C2	•	•	•	•	
14	CRX 1208030	1200 x 800 x 300	1164 x 750	2	C2	•	•	•	•	

• Gland hole A 174 x 60

• Gland hole B 259 x 88

• Gland hole C 310 x 115

\* All dimension in mm

### Optional Items



Canopy and Rain Hood (SS304)



Wall mounting bracket (SS304)



Filter and fan



Inner Door (painted steel)



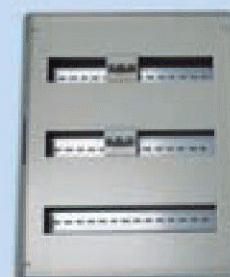
Transparent Door (SS304)



Die cast quarter turn lock



Metal cam lock with keys



Modular Chassis  
(painted steel)

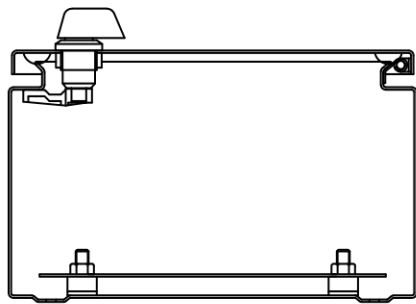
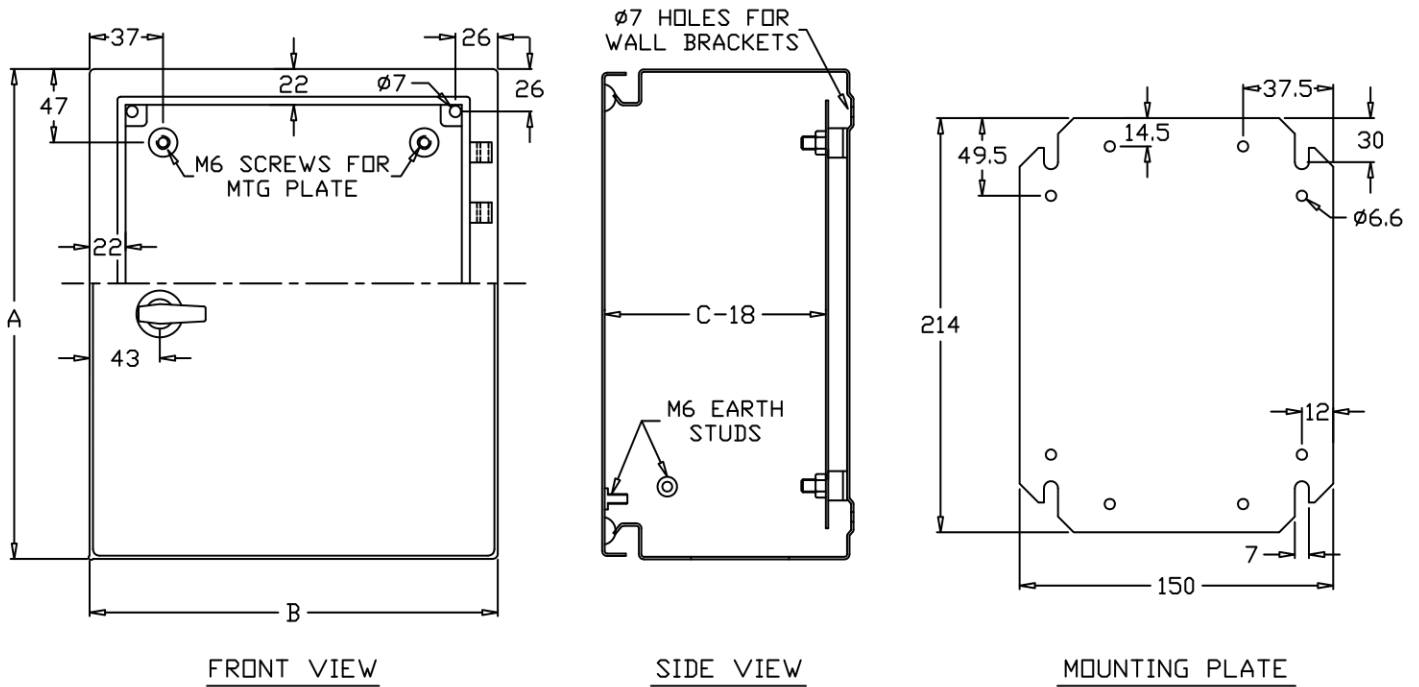
# CVS METAL INDUSTRIES SDN BHD

IP65

COMPLETE PRODUCT SPECIFICATIONS & DIMENSIONS

CVS-S15  
Rev : 3

## STAINLESS STEEL WALL MOUNT INDUSTRIAL METAL ENCLOSURE



BOTTOM VIEW

CRX MODEL DESCRIPTION		
PART NAME	MATERIAL	FINISHING
BODY/DOOR	1.5MM SS304	HAIRLINE FINISH ON EXTERNAL SURFACE
MOUNTING PLATE	1.4MM M.S	GALVANIZED PLATED
WALL BRACKET (OPTIONAL)	2.0MM SS304	2B FINISH

MODEL	A	B	C	GLAND OPENINGS	NO. OF LOCKS	NO. OF WALL BRACKETS	WEIGHT (KG)
CRX252015	250	200	153	0	1	0	3.5

- NOTES: 1) MEASUREMENTS ARE IN MM  
2) NO GLAND OPENING  
3) SS316 MATERIAL (CRXX MODEL) AVAILABLE UPON REQUEST

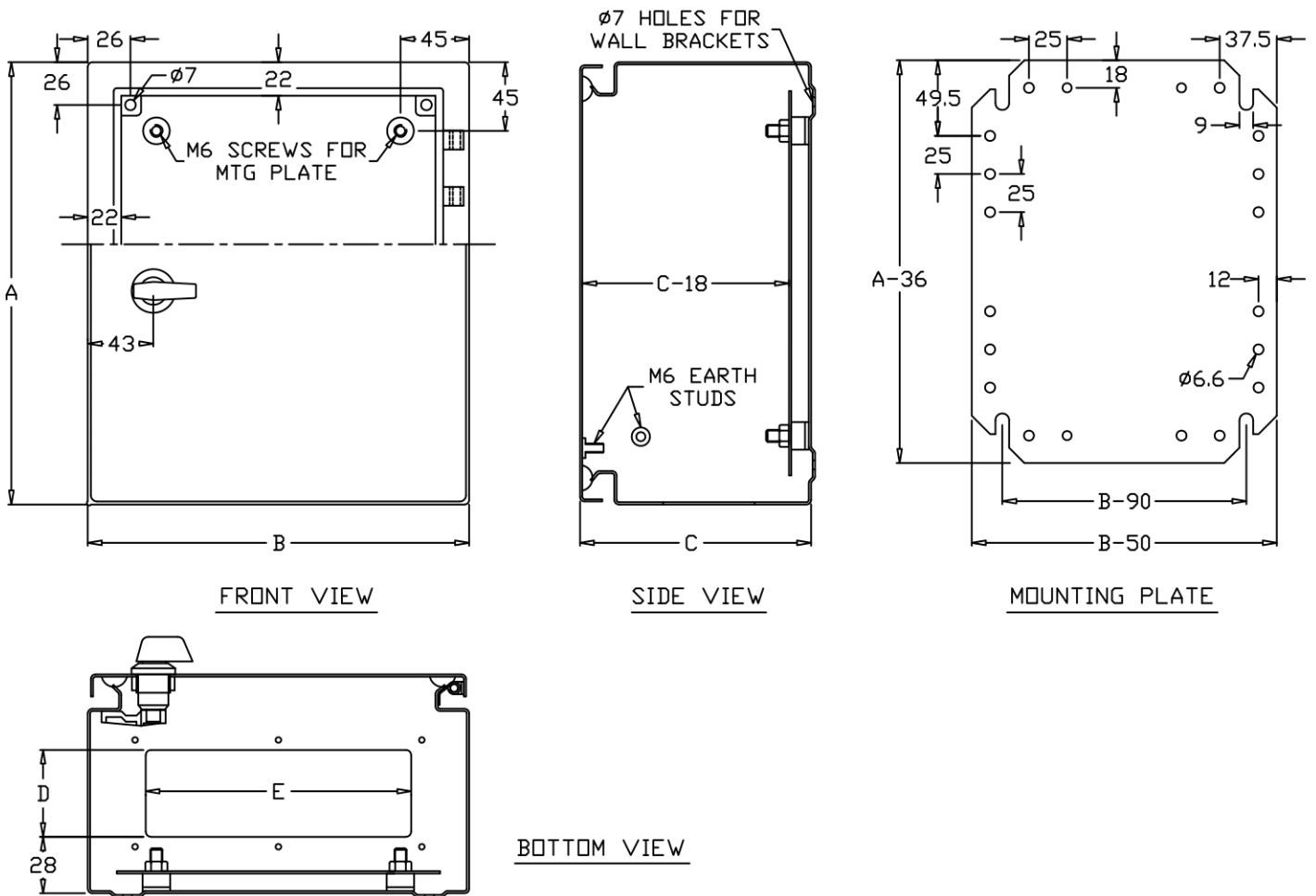
# CVS METAL INDUSTRIES SDN BHD

IP65

COMPLETE PRODUCT SPECIFICATIONS & DIMENSIONS

CVS-S15  
Rev : 3

## STAINLESS STEEL WALL MOUNT INDUSTRIAL METAL ENCLOSURE



CRX MODEL DESCRIPTION		
PART NAME	MATERIAL	FINISHING
BODY/GLAND PLATE	1.5MM SS304	HAIRLINE FINISH ON EXTERNAL SURFACE
DOOR	1.5/2.0MM SS304	
MOUNTING PLATE	1.4/2.0MM M.S	GALVANIZED PLATED
WALL BRACKET (OPTIONAL)	2.0MM SS304	2B FINISH

MODEL	A	B	C	D	E	DOOR THICKNESS	BOT. GLAND TYPE	NO. OF LOCK	WEIGHT (KG)
CRX302515	300	250	153	60	174	1.5	A1	1	4.8
CRX303015	300	300	153	60	174	1.5	A1	1	5.4
CRX403015	400	300	153	60	174	1.5	A1	1	7.2
CRX403020	400	300	203	60	174	1.5	A1	1	8.0
CRX404020	400	400	203	88	259	1.5	B1	1	10.2
CRX504020	500	400	203	88	259	1.5	B1	2	12.2
CRX604020	600	400	203	88	259	1.5	B1	2	14.4
CRX606025	600	600	253	115	310	1.5	C1	2	22.5
CRX705025	700	500	253	115	310	1.5	C1	2	21.3
CRX806025	800	600	253	115	310	2.0	C1	2	29.7

NOTES: 1) MEASUREMENTS ARE IN MM

2) SINGLE GLAND OPENING ON BOTTOM

3) ALL MOUNTING PLATE THICKNESS 2.0MM EXCEPT CRX 302515 & CRX 303015

4) SS 316 MATERIAL (CRXX MODEL) AVAILABLE UPON REQUEST

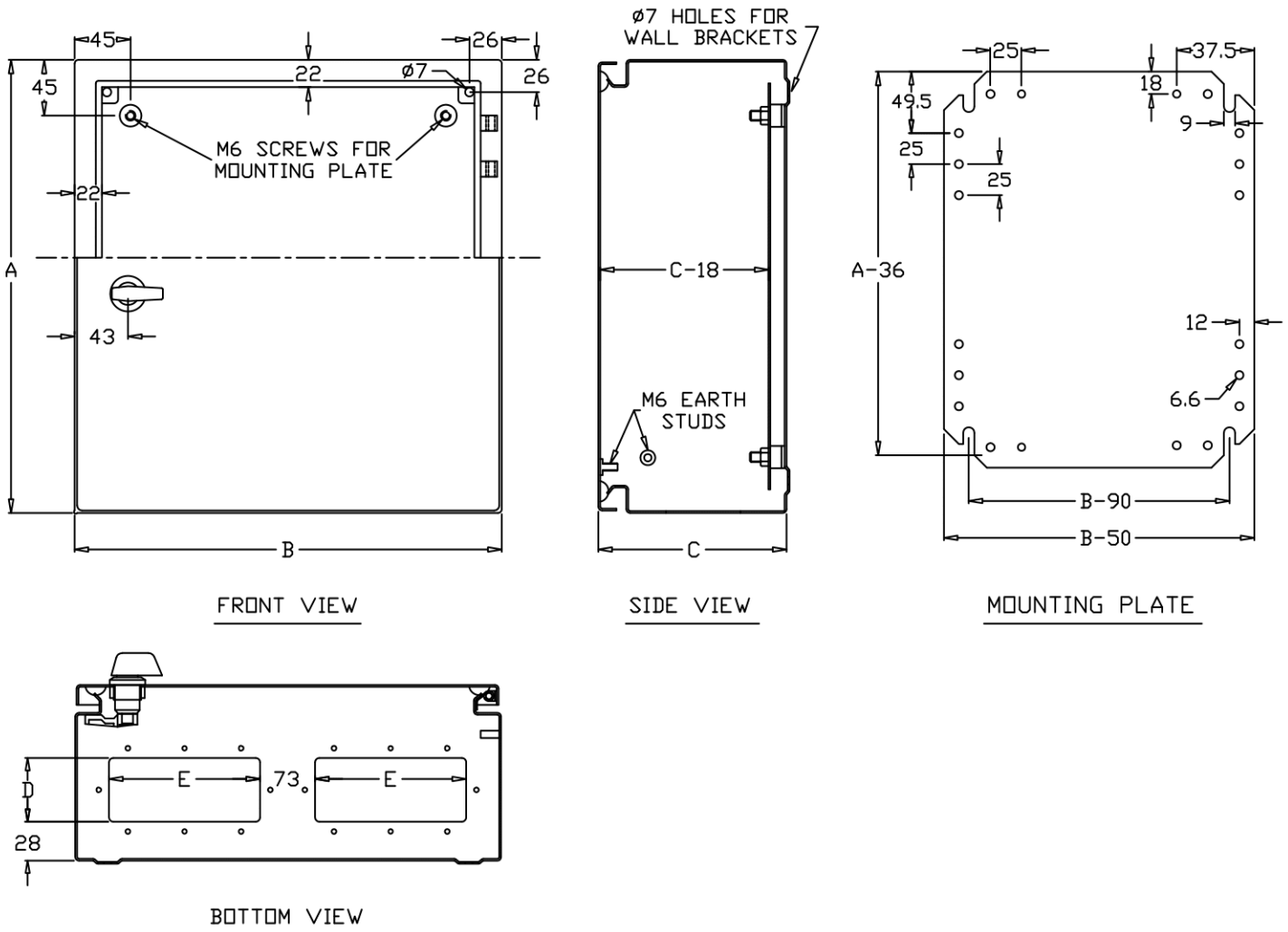
# CVS METAL INDUSTRIES SDN BHD

IP65

COMPLETE PRODUCT SPECIFICATIONS & DIMENSIONS

CVS-S15  
Rev : 0

## STAINLESS STEEL WALL MOUNT INDUSTRIAL METAL ENCLOSURE



CRX MODEL DESCRIPTION		
PART NAME	MATERIAL	FINISHING
BODY/GLAND PLATE	1.5MM SS304	HAIRLINE FINISH ON EXTERNAL SURFACE
DOOR	2.0MM SS304	
MOUNTING PLATE	2.0MM M.S	GALVANIZED PLATED
WALL BRACKET (OPTIONAL)	2.0MM SS304	2B FINISH

MODEL	A	B	C	D	E	BOTTOM GLAND TYPE	NO. OF LOCKS	WEIGHT (KG)
CRX808030	800	800	303	115	310	C2	2	39.9
CRX1008030	1000	800	303	115	310	C2	2	48.2
CRX1208030	1200	800	303	115	310	C2	2	56.5

- NOTES: 1) MEASUREMENTS ARE IN MM  
 2) DOUBLE GLAND OPENINGS ON BOTTOM  
 3) SS316 MATERIAL (CRXX MODEL) AVAILABLE UPON REQUEST